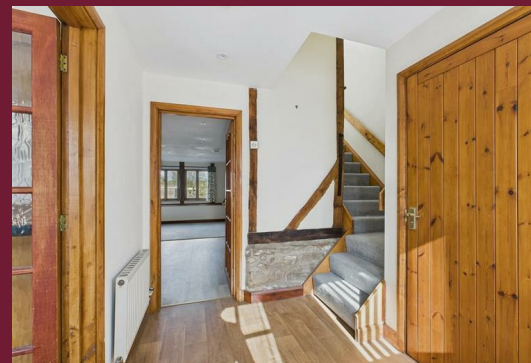




Field View Moor Court, Malvern, WR13 6JW

£1,400 Per Month

A very well presented end of terrace barn conversion located in the village of Upper Pendock. The accommodation comprises, entrance hall, downstairs cloakroom, kitchen with electric oven and space/plumbing for washing machine and dishwasher, spacious dining room and lounge, three double bedrooms, family bathroom with bath, walk in shower, WC & wash hand basin, additional WC next to bathroom, and large storage space under the eaves from one of the bedrooms. Further benefits include oil fired central heating, off road parking for 2 cars, enclosed patio area and two raised beds. Available immediately, EPC rating D, Council tax band D- Malvern Hills District Council. Deposit £1615. Holding deposit £323.
WATER AND SEWERAGE CHARGES INCLUDED IN THE RENT



Field View, Moor Court, Upper Pendock, Malvern, WR13 6JW

Information

TENANT FEES:

HOLDING DEPOSIT: A refundable* holding fee equivalent to one week's rent (£323) is payable in advance in order to reserve the property. The holding fee will be deducted from the first month's rent payment.
*Conditions apply

DEPOSIT: A deposit of £1615 will be required as security against damage or arrears of rent.

RENT: £1400 Per calendar month inclusive of water and sewerage

FURNISHINGS: The property is offered to let unfurnished

RESTRICTIONS: Non-smokers only, No dogs- may consider cats

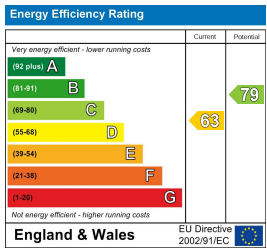
TERM: Six months minimum. A longer term may be available by negotiation.

APPLICATION: You must complete an application form and online referencing form. This must be completed and returned promptly. Photographic ID (passport) and a current proof of address will be required by all applicants

The property will remain on the market until satisfactory referencing has been received from our referencing company.



EPC



Material Information Report

